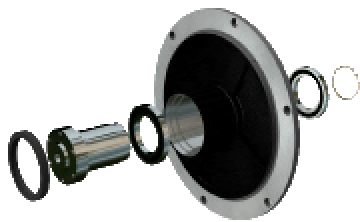


PERIFLO PUMPS IN ACTION

PeriFlo Pumps and Controls feed a continuous sludge sampling loop at a major southeast wastewater treatment facility.

Design: PeriFlo FMP40 peristaltic pump with PeriFlo UL Listed NEMA 4X controls circulate 3 to 10 gpm of 1 to 4% municipal sludge in a continuous sampling loop.

Long Gearbox Life: PeriFlo's rugged FMP series pumps feature *PeriFlo's "Direct-Connected" design with oversized pump shaft and heavy-duty internal Cartridge Bearing Assembly.*



This simple, rugged, (6) component design puts the bearings inside the pump and directly under the high radial forces of hose compression. The arrangement easily absorbs all radial pump loads and completely eliminates radial loading of gearbox bearings. ***ZERO radial loads on the gearbox !!!***
Low Maintenance
..... and long, long gearbox life !!!



Pumps & Controls in Action

PeriFlo Controls Provide Reliable, Single Source Responsibility: PeriFlo's ability to engineer, design and fabricate ***UL Listed*** control systems means single source responsibility, reduced startup time and optimum system performance. PeriFlo's experienced engineering design staff carefully review the system control specifications and interface requirements of the project. They can select from a variety of standard PeriFlo control systems that can be configured to the application or they can design a custom control solution. Whether system requirements include Local operation only, Local and/or Remote operation, a customer specified VFD manufacturer, digital or hardwired communication interfaces, PeriFlo can provide a reliable control solution.

Factory Tested: All PeriFlo pump and control systems are completely factory tested as an operating unit prior to shipment, dramatically reducing field installation and startup challenges from mismatched or untested equipment. ***The result***
..... a highly reliable pump and control system with easy installation and reduced startup costs !!!