

Chem*XFR*

SEALLESS MAG-DRIVE CHEMICAL TRANSFER PUMPS



End Suction

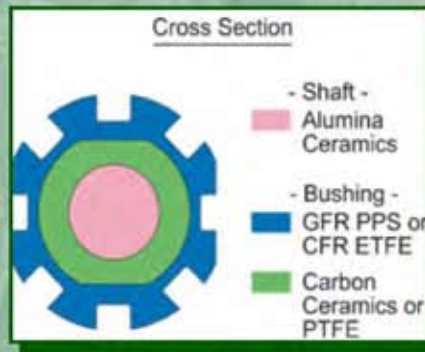
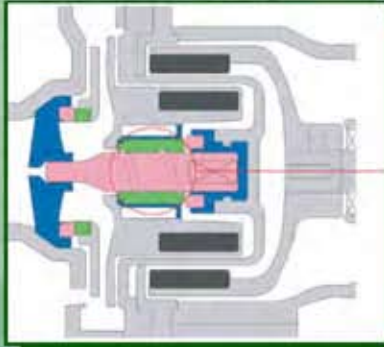
Self-Priming



POLYPRO AND ETFE CONSTRUCTION
for a wide range of chemical transfer applications...
...acids, caustics, corrosives.

CHEM_{XFR} / END SUCTION

HEAT RESISTANT BUSHING (PATENTED)



Dry running of magnetically driven pumps often leads to failure of the shaft and/or bushing from the excessive buildup of frictional heat. Patented construction of the GS/GSF series uses heat-releasing and heat-resistant materials to reduce heat buildup, prevent thermal deformation and eliminate failures.



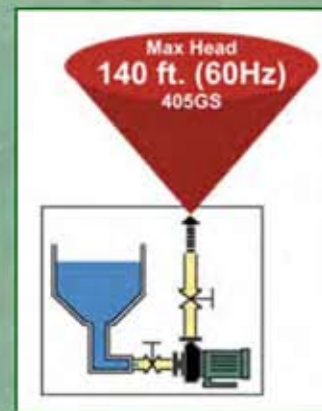
**Chem_{XFR} Pumps
and Controls**

FEATURES

- 1. Sealless Mag-Drive Technology**
 - Safe, reliable and completely sealed pump design
 - Eliminates costly and problematic mechanic seals
- 2. Construction**
 - Glass Fiber Reinforced Polypropylene or Carbon Fiber Reinforced ETFE as Required
- 3. Bushing Materials Handle a Wide Range of Chemicals**
 - Bushings can be selected from Carbon, PTFE, Ceramic or SIC for maximum chemical compatibility
- 4. One-Piece Impeller / High Strength Magnet Assembly**
 - Compact design provides excellent performance with high specific gravity liquids
- 5. Two-Point Shaft Support for Rugged Durability**
 - Two-point stationary shaft support eliminates shaft deflection and reduces wear for long-life
 - Optional SIC shafts provide additional wear resistance for abrasive materials
- 6. Adjustable ANSI Flanges for Easy Installation**
- 7. Compact Close-Coupled Design with NEMA C-Face Motor**

APPLICATIONS

- > Corrosive Chemicals
- > Chemical Transfer
- > Water Treatment
- > Waste Water Treatment
- > High Specific Gravity Liquids to 2.0



Completed Skidded Systems
UL Listed Custom Control Panels

CHEM_{XFR} / END SUCTION

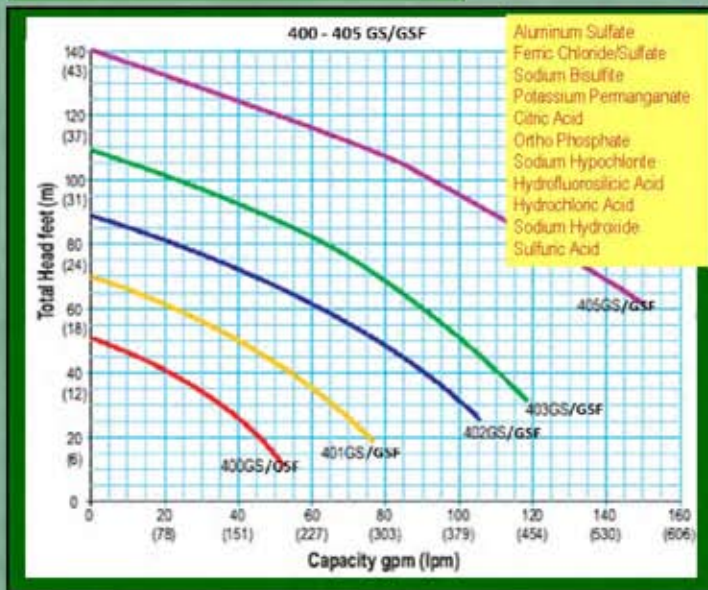
MODEL DESIGNATION

XFR - 40 2 GS - A D 6 - F
 (1) (2) (3) (4) (5) (6) (7)

- | | | | | |
|---|---|---|--|--------------------------|
| (1) Discharge Bore
40: 1.5" | (3) Type
GS: GFR PP
GSF: CFR ETFE | (4) Bushing Material
A: Ceramic
C: Carbon
R: PTFE
T: SiC bushing w/ceramic shaft
TT: SiC bushing w/SiC shaft | (5) O-ring Material
D: FPM
E: EPDM | (6) Frequency
6: 60Hz |
| (2) Motor Output
0: 3/4 HP 3: 3HP
1: 1HP 5: 5HP
2: 2HP | | | (7) Front Casing
F: Flanged Type
None: NPT Threaded Type | |

Note: GFR PP-Glass Fiber Reinforced Polypropylene CFR ETFE-Carbon Fiber Reinforced Tetrafluoroethylene

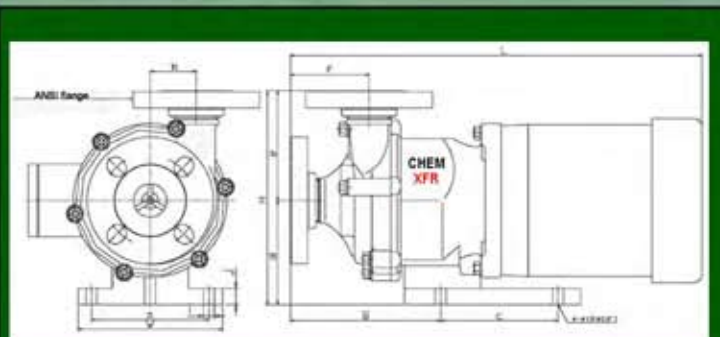
PERFORMANCE CURVES



SPECIFICATION

MODEL	SUCx DISC	HP	MAX GPM	MAX TDH (ft)	MAGNET	BUSHING	O-RING
XFR-400GS	1.5" x 1.5"	3/4	53	50	Ferrite	Carbon Ceramic PTFE SiC	FPM EPDM
XFR-401GS	1.5" x 1.5"	1	77	69			
XFR-402GS	2.0" x 1.5"	2	106	88	Neodymium		
XFR-403GS	2.0" x 1.5"	3	119	108			
XFR-405GS	2.0" x 1.5"	5	150	140			
XFR-400GSF	1.5" x 1.5"	3/4	48	39	Ferrite		
XFR-401GSF	1.5" x 1.5"	1	69	58			
XFR-402GSF	2.0" x 1.5"	2	102	85	Neodymium		
XFR-403GSF	2.0" x 1.5"	3	115	101			
XFR-405GSF	2.0" x 1.5"	5	137	121			

OUTLINE DIMENSION

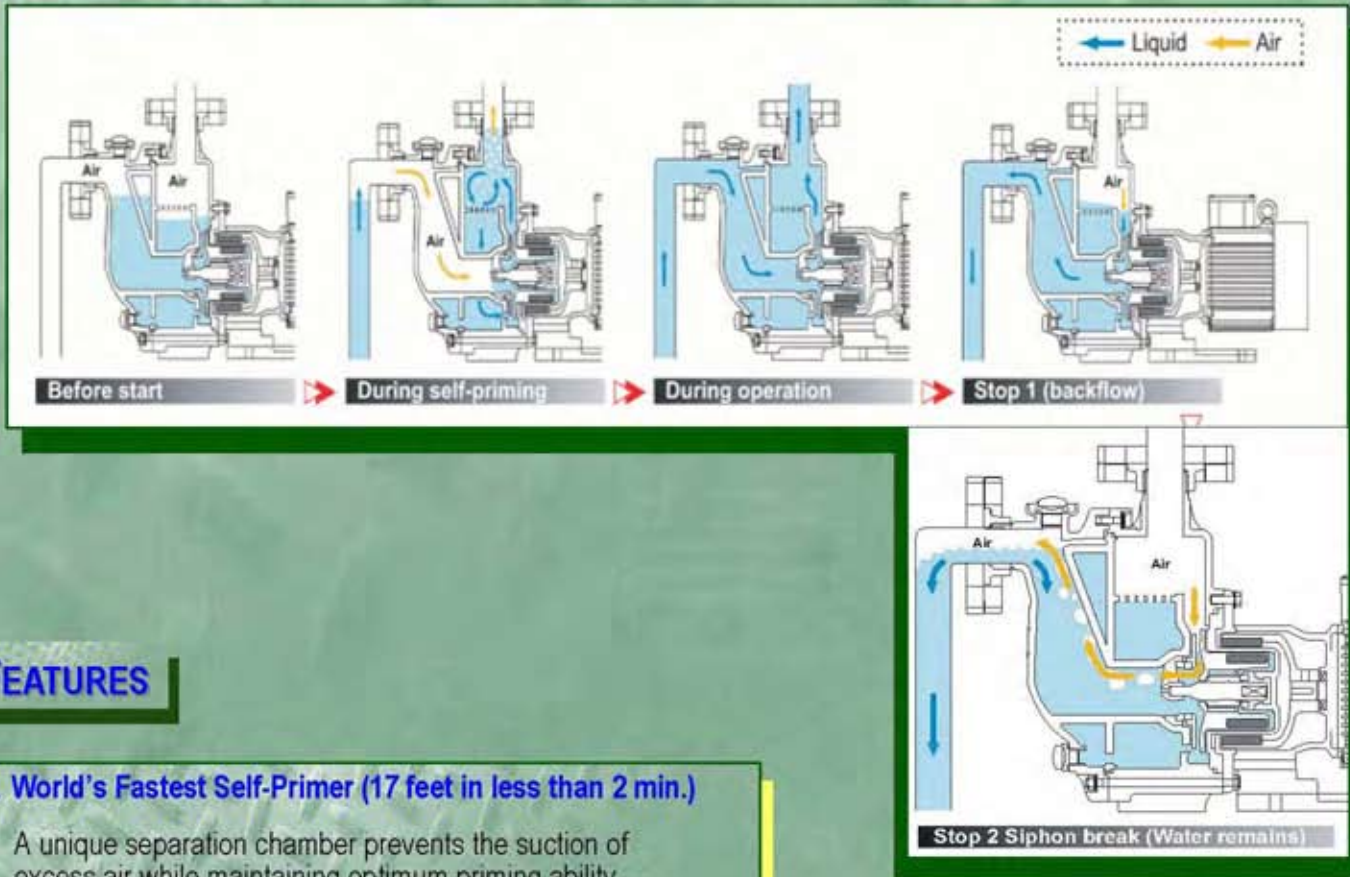


MODEL	W	H	L	a	b	c	d	e	f	g	i	j
XFR-400GS(F)	5.5	8.5	16.7	4.3	2.0	3.9	3.7	4.8	3.4	5.9	φ 0.5	0.7
XFR-401GS(F)	6.3	10.0	18.4	5.1	2.3	5.1	4.5	5.5	4.1	7.2	φ 0.5	0.7
XFR-402GS(F)	10.2	10.3	19.3	8.2	2.6	7.9	4.6	5.7	3.5	6.1	φ 0.6	0.8
XFR-403GS(F)	10.2	10.3	19.3	8.2	2.6	7.9	4.6	5.7	3.5	6.1	φ 0.6	0.8
XFR-405GS(F)	10.2	11.0	22.0	9.1	2.6	10.3	5.3	5.7	3.5	6.1	φ 0.6	0.8

Unit inch

CHEM_XFR / SELF-PRIMING

UNIQUE VALVELESS MECHANISM (PATENTED)



FEATURES

1. World's Fastest Self-Primer (17 feet in less than 2 min.)

A unique separation chamber prevents the suction of excess air while maintaining optimum priming ability. Compact in design, it has the world's fastest suction capacity, priming 17 ft. in less than 2 minutes.

2. Cavitation Free Design

Air entering the chamber during priming operation is easily directed through the pump by the unique design of the rear casing and impeller.

3. Dry Run Prevention

Dry running is prevented by a patented valveless mechanism that retains fluid inside the pump when it is turned off, even without a footvalve in the system.

4. Compact Design and Construction

The most compact design in its class, this close-coupled pump with NEMA C-Face motor is built for maximum endurance and high efficiency. All parts, including the shaft, are replaceable for easy low cost maintenance.

5. Adjustable ANSI Flanges for Easy Installation

Adjustable ANSI flanges can be rotated easily by hand to quickly match piping systems.

APPLICATIONS

- > Transfer highly corrosive, hazardous or high-gravity liquids
- > Install pumps where space is limited
- > Transfer highly corrosive liquids from leak-proof or below grade tanks
- > Transfer foamy liquid or high specific gravity liquids
- > Pump liquid to elevated tanks
- > Pump from underground pits
- > Transfer from metal drums or plastic containers

CHEM_XFR / SELF-PRIMING

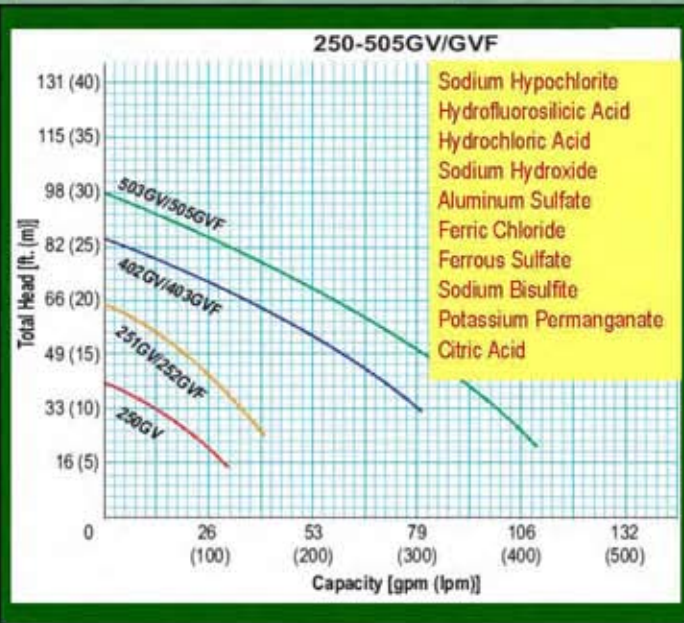
MODEL DESIGNATION

XFR - 2 5 0 GV - CD 6
 (1) (2) (3) (4) (5)

(1) Discharge Bore	(2) Motor Output	(3) Main Material	(4) Bushing / O-ring Material	(5) Frequency
25: 1.0" (25mm) 40: 1.5" (40mm) 50: 2.0" (50mm)	0: 1/2 or 3/4 HP 1: 1HP 2: 2HP 3: 3HP 5: 5HP	GV: GFR PP GVF: CFR ETFE	CE: Carbon / EPDM CD: Carbon / FPM AE: Alumina Ceramic / EPDM AD: Alumina Ceramic / FPM TT: Special Material	6: 60Hz

Note: GFR PP-Glass Fiber Reinforced Polypropylene CFR ETFE-Carbon Fiber Reinforced Tetrafluoroethylene

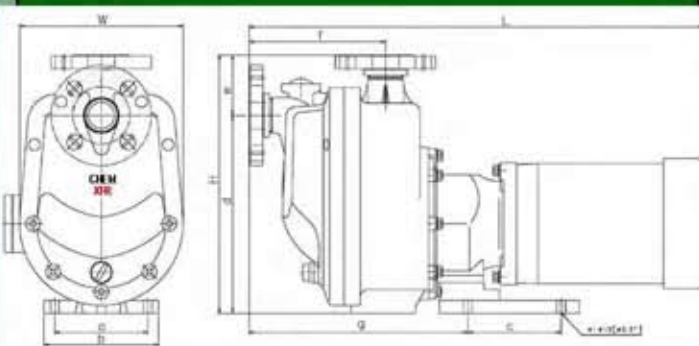
PERFORMANCE CURVES



SPECIFICATION

MODEL	NOMINAL END-FLANGE DIAMETER [Inch]		MAX HEAD - MAX CAPACITY	STANDARD SPECIFIED POINT	MOTOR OUTPUT [HP]
	SUCTION	DISCHARGE	[ft.-gpm]	[ft.-gpm]	
XFR-250GV	1	1	41 - 32	26 - 21	1/2
XFR-251GV(F)	1	1	66 - 41	39 - 29	1
XFR-252GV(F)	1	1	66 - 41	39 - 29	2
XFR-401GV	1.5	1.5	-	-	1
XFR-402GV(F)	1.5	1.5	85 - 81	56 - 53	2
XFR-403GV(F)	1.5	1.5	85 - 81	56 - 53	3
XFR-502GV	2	2	-	-	2
XFR-503GV(F)	2	2	98 - 110	59 - 66	3
XFR-505GV(F)	2	2	98 - 110	59 - 110	5

OUTLINE DIMENSION




MODEL	Unit inch									
	W	H	L	a	b	c	d	e	f	g
XFR-250 GV			21.0							
XFR-251GV(F)	7.7	12.8	22.1	5.1	6.3	5.1	10.0	2.8	6.6	10.8
XFR-252GV(F)			23.3							
XFR401GV			23.3							
XFR-402GV(F)	9.0	14.2		5.1	6.3	5.1	10.9	3.3	7.5	12.0
XFR-403GV(F)			24.5							
XFR-502GV			25.3	8.2		7.9				
XFR-503GV(F)	9.8	15.3			10.2		11.7	3.7	8.1	12.2
XFR-503GV(F)			28.1	9.1		10.3				

*Measurements are subject to change without notice



27101 Airport Rd
Punta Gorda, FL 33982
Phone: (800) 860-2983
www.periflo.com

An IDEX Water & Wastewater Business 

CXFR001 FEB 2001Rev